



Your project, our challenge...

Golias T-40



APPLICATIONS

Industrial lighting

Storage and industrial halls

DESCRIPTION

The Golias-T40 is a 250W or 400W pendant high bay light.
Optimal height of installation is 6-14 m.

Golias-T40 fitting is delivered with lamp.

Body/gear box is made of aluminium with plastic sides.
Bottom cover is made of tempered safety glass (only IP54 finishing).
Reflector is made of aluminium.

Temperature range: Ta = -20°C to +40°C

Mounting can be done with bracket for ceiling, made of pre-galvanized steel.
Can be mounted to the lamp with a bolt and fasted to the ceiling with a screw.
H:90mm, W: 50mm, Ø11. (Bracket is not included, must be ordered separately).



Golias T-40

PRODUCT VARIATION

Electrical

Electromagnetic ballast 230V/50Hz, with parallel compensation

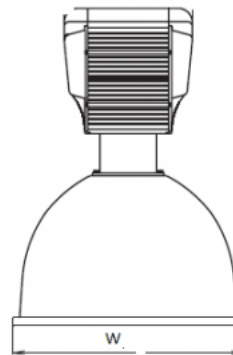
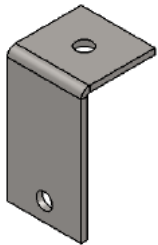
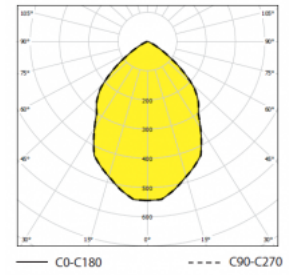
Mounting

Suspension by means of wire, chain or carrier rope, or on bracket.

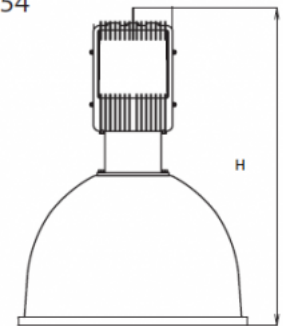
Reflector

Parabolic aluminium reflector

GOLIAS-T40-250H, 1x250W, IP 54



IP 54



PRODUCT TYPES

Item no.	Watt	Tube	L	W	H
Golias	250 W	HIE/E40		475	665

Subject to technical changes, misprints and errors