



Your project, our challenge...

## Exit Light 4 W FLS



### APPLICATIONS

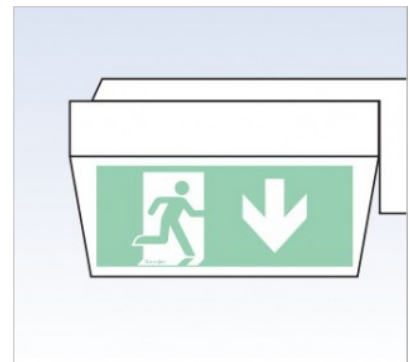
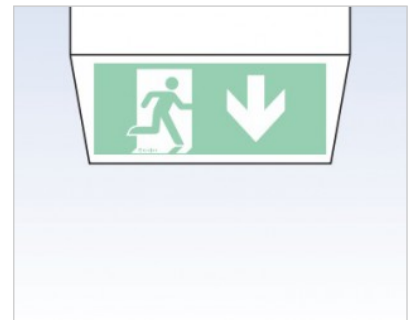
- |   |                     |
|---|---------------------|
| Office lighting                         | School lighting     |
| Shop lighting                           | Industrial lighting |
| Corridors, stairwells, restaurants etc. |                     |

### DESCRIPTION

Emergency light with LED-Technology.  
 3 LED's, colour white as illuminant.  
 Visibility range 26 m.  
 Including one pictogram.

Temperature range:  
 Without emergency battery backup in use: Ta = -10°C to +40°C  
 With emergency battery backup in use: Ta = 0°C to +40°C\*

\*Ambient temperature above 20°C decrease the battery lifetime.



# Exit Light 4 W FLS

## PRODUCT VARIATION

### Housing

High grade UV-resistant PC.

### Accessory

Earmounting.  
 Wall basket.  
 3 pictograms (left, right and down).  
 Accessory is not included, must be ordered separately.

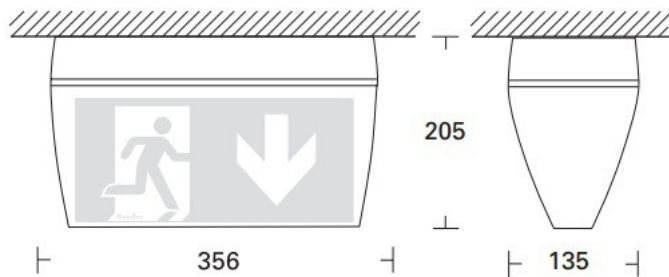
### Electrical

Power supply: 230V(5%/-10%) 50 Hz.

Lamps: 3 x LED, white with 30000 hour service life  
 Alternative with emergency backup. Burntime in battery mode: > 3 h  
 Can also be connected to external UPS (230V / 50Hz.)

### Mounting

Ceiling installation.  
 Accessory: Earmounting or wall installation.



## PRODUCT TYPES

Item no.	Watt	Tube	L	W	H
Exit Light	4W	LED	356	135	205

Subject to technical changes, misprints and errors